

CERTIFICATE OF LOCATION OF GOVERNMENT CORNER

NORTHEAST Corner of Section 33, Township 108N, Range 39W

5th Principal Meridian, State of Minnesota, County of MURRAY

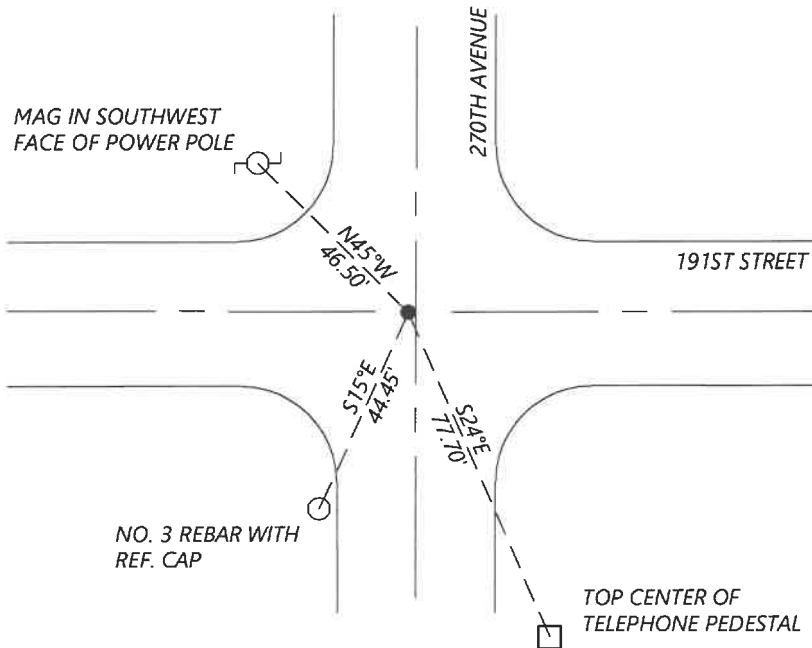
At the corner location shown on the sketch:

On 8/27/2020 found a NO. 4 REBAR WITH YELLOW CAP "LS 12967" DOWN 1.3FT
DATE

left monument as found lowered monument removed monument (explain)

On _____ placed a _____
DATE

SKETCH OF REFERENCE TIES



N.T.S.

Statement of evidence for this corner location is on back of this page.

I hereby certify that this document was researched and prepared by me or under my direct supervision and that I am a licensed Land Surveyor under the laws of the State of Minnesota.

Signature [Handwritten Signature]

Date 6/17/2021 License No. 45874

Title:

- Land Surveyor Professional Engineer
- County Surveyor County Engineer

OFFICE OF THE COUNTY RECORDER

County of Murray

I hereby certify that this document was filed in the Co.

Recorder's office at _____ M. on the _____ day of _____ A.D. 20

County Recorder [Handwritten Signature: Karen Bram]

by JUN 22 2021, Deputy

DOCUMENT NO. _____

Statement of Evidence:

Northeast Corner of Section 33, Township 108 North, Range 39 West, 5th Principal Meridian, Murray County, Minnesota.

1861 July, GLO Notes: Set post in mound.

N/A Survey record for Section 34 shows the original government corner was found. A distance of 2674.5ft is shown to the North Quarter corner and 2646.0ft is shown to the West Quarter corner.

1980 October, Corner certificate by LS 12967 shows that he found a wooden lath and rotted hub and placed a $\frac{1}{2}$ " rebar with cap #12967 over the lath and hub.

2016 August, Highway Department records show a found iron with Martin cap at the corner. Coordinated show:
N: 200460.63 E: 563999.22

2020 September, Westwood Professional Services searched and found an iron with cap #12967 as per 1980 corner certificate. Did not find any reference ties. Iron fits coordinates from Highway Department data. I accepted the found monument and set new reference ties.

Analysis of the recovered data, field evidence and survey measurements, indicates that the monument found is the correct perpetuation of this corner. For additional information concerning this corner please contact Westwood Professional Services.